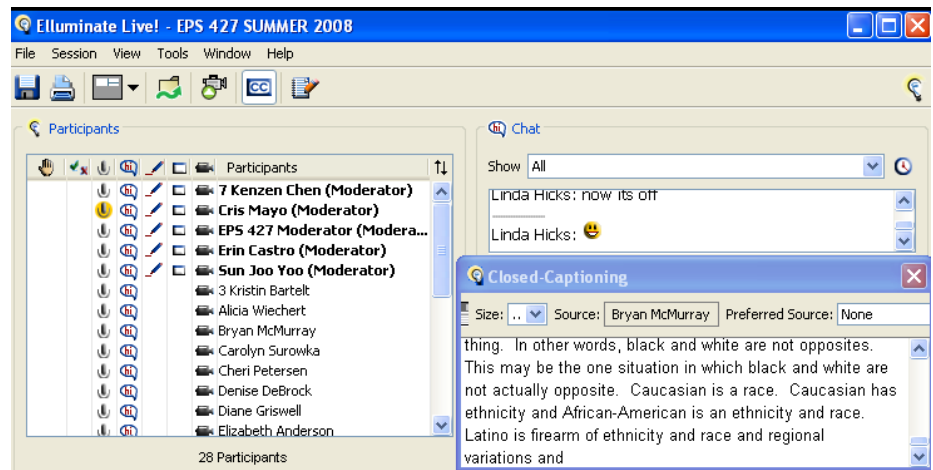


## Using Captioning Resources in Elluminate Live! Session

A remote real-time caption can be applied by a skilled captioner, who helps your disabled students catch up what happens in the synchronous classroom lively(lecture, group discussion, debate, and so on). With captioning, disabled students are able to join classmates' discussion, or other synchronous learning activities. This tutorial will show you how captioning works when a real course session is processing.



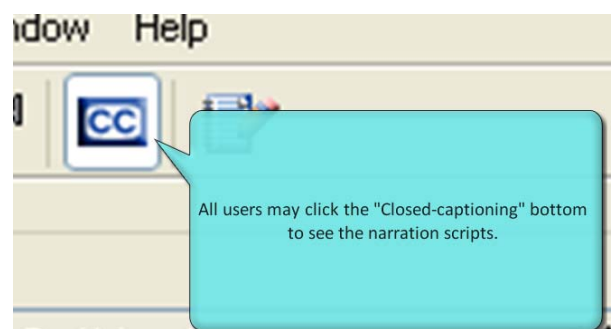
### 1. Using this service

If there are disabled students in your class, the caption service which provided by Rehabilitation-Education Services at UIUC, can also applied to our online courses!

A captioner will be assigned to the disabled student before course starts. Bryan McMurray ([bryanmc@uiuc.edu](mailto:bryanmc@uiuc.edu)) is the case manager for students with vision or hearing impairments. To achieve the accurate captions, it is better for the captioner to be familiar with course materials and readings as well. Contact Bryan or the student directly to get the captioner's information, and add s/he into your class, both Moodle and Elluminate.

### 2. Settings in Elluminate


Staffs of Learning Design Lab will setup all the required steps before Live! Session starts. You may remind other normal students that they can also see the narrations by clicking



the CC bottom on the Elluminate tool bar.

### 3. Collaborate with captioner

The captioner is not solely responsible for the quality of the translation. The conduct of the participants in the room can greatly affect real-time translation. People are cross-talking; the speaker is talking too fast; the speaker is not talking clearly; someone in the room has sneezed/coughed making it difficult to hear; a shuffling of papers in the room, may result in a mistranslate or untranslate. If a person says, "I saw 'em over there," the captioner can usually determine from the context whether that should be "him" or "them." It is sometimes difficult to do that while writing technical terminology in real-time.

A good practice is to establish a classroom common view that allows only one person talks, questions or argues at the same time. Encourage students to use the "raise hand" functions  first, when instructor call he/her name, then talk.

### 4. Online Resources

What is Closed-Captioning? How does it work in Elluminate Live!?

<http://support.illuminate.com/ics/support/default.asp?deptID=2653>

How do I enter text into closed-captioning?

<http://support.illuminate.com/ics/support/default.asp?deptID=2653>

How do I save my closed-captioning text?

<http://support.illuminate.com/ics/support/default.asp?deptID=2653>

How do I grant permission to enter closed-captioning text?

<http://support.illuminate.com/ics/support/default.asp?deptID=2653>

What do all the closed-captioning status indicators mean?

<http://support.illuminate.com/ics/support/default.asp?deptID=2653>

You may also contact Education Online staffs for more details.