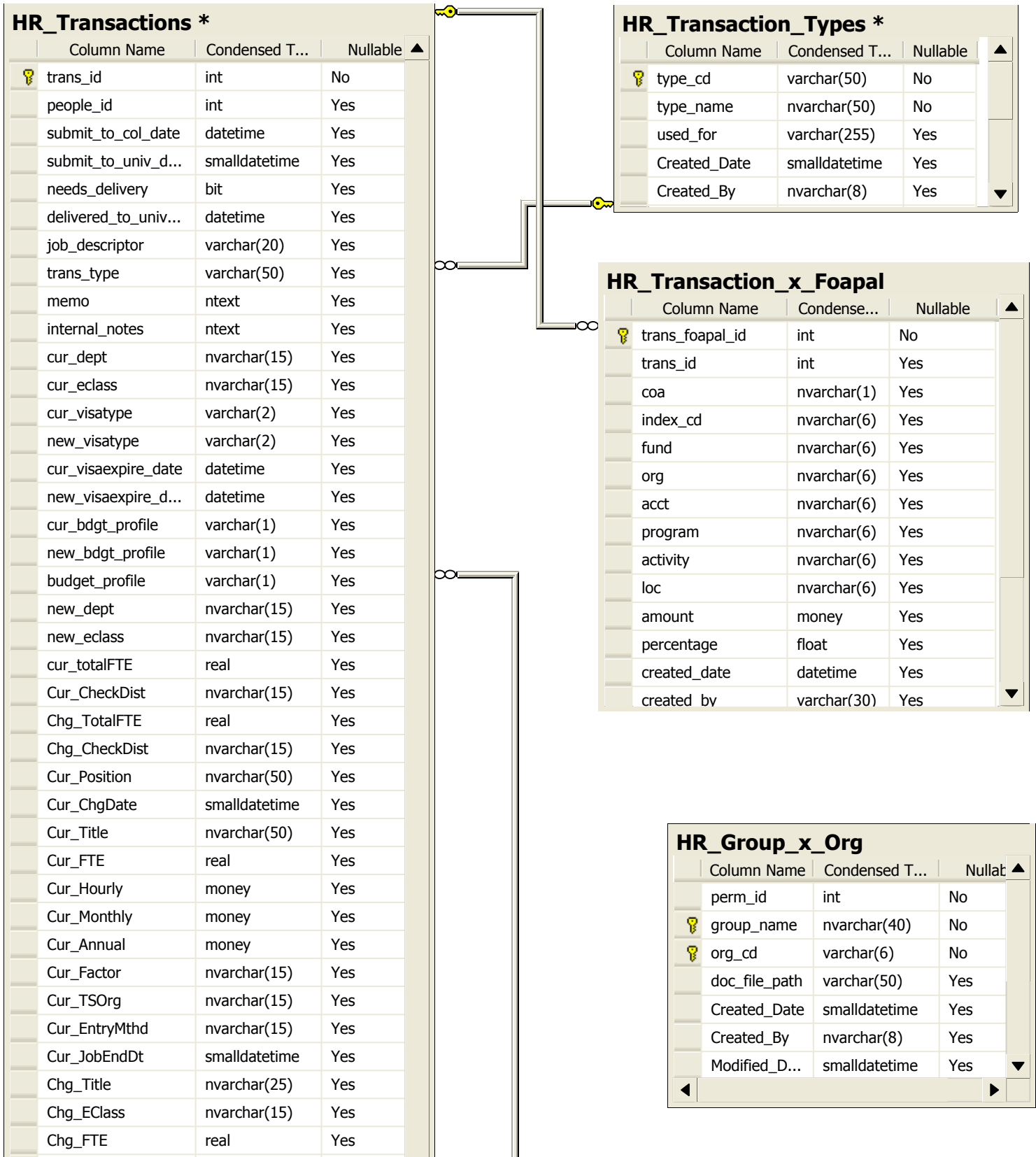


HR Transactions

Oct 2006
sourced from rtarvin



Chg_Hourly	money	Yes
Chg_Monthly	money	Yes
Chg_Annual	money	Yes
Chg_Factor	nvarchar(15)	Yes
Chg_TSOrg	nvarchar(15)	Yes
Chg_EntryMthd	nvarchar(15)	Yes
Chg_JobEndDt	smalldatetime	Yes
Chg_Other1	nvarchar(15)	Yes
Chg_Other2	nvarchar(15)	Yes
New_Position	nvarchar(50)	Yes
New_BeginDt	smalldatetime	Yes
New_JobType	nvarchar(25)	Yes
New_Title	nvarchar(50)	Yes
New_PClass	nvarchar(15)	Yes
New_FTE	varchar(15)	Yes
New_Hourly	money	Yes
New_Monthly	money	Yes
New_Annual	money	Yes
New_Factor	nvarchar(15)	Yes
New_TSOrg	nvarchar(15)	Yes
New_EntryMthd	nvarchar(15)	Yes
New_JobEndDt	smalldatetime	Yes
FoapalChgDt	smalldatetime	Yes
I9	bit	Yes
ExtHelp	bit	Yes
GrpChg	bit	Yes
CV	bit	Yes
OffLet	bit	Yes
MastRef	bit	Yes
ServExc	bit	Yes
Sep	bit	Yes
ChgFTE	bit	Yes
FlexYr	bit	Yes
Prov	bit	Yes
SumExc	bit	Yes
TmpUpG	bit	Yes
AASum	bit	Yes
online_app	bit	Yes
newhire_forms	bit	Yes
status	nvarchar(15)	Yes
submitter_org_cd	varchar(6)	Yes
dept_head_appro...	bit	Yes
delete_requested	bit	Yes
created_date	datetime	Yes
created_by	varchar(30)	Yes
modified_date	datetime	Yes
modified_by	varchar(30)	Yes

ED_PEOPLE

Column Name	Condensed T...	Nullable
people_id	int	No
EDW_PERS_...	int	Yes
uid	varchar(16)	Yes
username	varchar(30)	Yes
stu_demo_id	varchar(16)	Yes
ad_guid	varchar(35)	Yes
good_guid	bit	Yes
lname	varchar(40)	Yes
fname	varchar(30)	Yes
mname	varchar(30)	Yes
fname_infor...	varchar(50)	Yes
status	varchar(10)	Yes
email	varchar(60)	Yes
net_id_prior	varchar(30)	Yes
net_id_resol...	varchar(1)	Yes
birthdate	datetime	Yes
sex	char(1)	Yes
ethnicity	varchar(30)	Yes